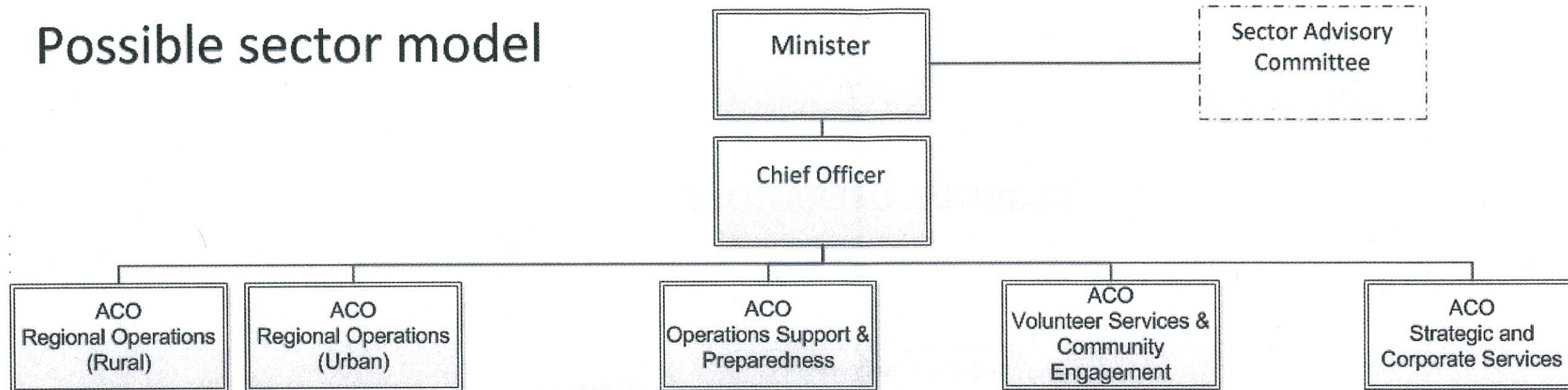


# Possible sector model



## Regional Operations

- Operational frontline services
- 8-11 regions
- Aligned to State emergency management boundaries
- Led by Regional Managers / Superintendents
- Each contain a mix of SES, CFS and MFS (and possibly VMR)
- Balanced staffing structure with regional HQ to support:
  - leadership and management
  - operations coordination
  - training coordination
  - response planning
  - volunteer support
  - WHS support
  - business and administration
  - emergency management support

## Operations Support

- Comcen and systems
- Operations planning
- Aviation Coord
- Marine Coord
- Exercises and validation
- Systems support
- SCC management
- Research and Development
- Public Information
- Media
- Lessons learned/management
- IMT coord and management

## Learning and Development

- RTO management
- Skill Development
- Flexible Learning technologies
- Trainer/Assessor Development

## Volunteer services & community engagement

- Volunteer support
- Cadet program support
- Volunteer advocacy
- Community education & resilience
- Emergency Management
- Regulatory compliance (fire)
- ZEMC and Bushfire management committee support
- NDRP administration

## Business Services

- Administration & Records
- WHS & IM
- Finance
- HR & IR
- Procurement
- ICT
- Assets & Capital works (Fleet & Facilities)
- Internal Audit

## Strategic Services

- Min & Cabinet Support
- National collaboration coordination
- Policy & Standards
- Strategic Planning
- Research and Analysis
- Legal & Risk services
- Program evaluation
- Business Analytics
- Corporate Communications

# REGIONAL OPERATIONS

